

# Tura 133



**MIN BLOCK: 10.5 x 21m** Based on 2.1m front / 3.7m rear setback

- 3
- 2
- 1

## AREA ANALYSIS

<b>Living</b>	90.05m <sup>2</sup> (9.69sq)
<b>Garage</b>	24.49m <sup>2</sup> (2.63sq)
<b>Porch</b>	2.02m <sup>2</sup> (0.21sq)
<b>Alfresco</b>	6.30m <sup>2</sup> (0.67sq)
<b>Total</b>	<b>122.86m<sup>2</sup> (13.22sq)</b>

## OVERALL DIMENSIONS

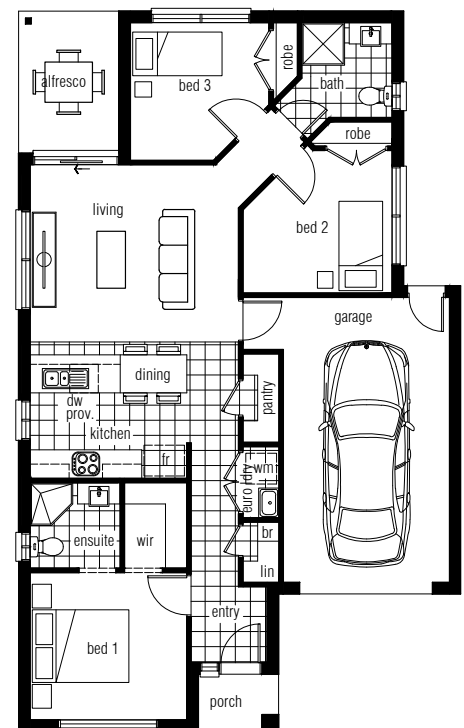
**Width 9.3m Depth 15.15m**

## KEY FEATURES

- Master Bedroom located at front with its own walk-in-robe and ensuite
- Large walk in pantry and storage cupboard
- Well proportioned central living zone with access to rear alfresco
- Two other bedrooms conveniently located adjacent to bathroom

## ROOM SIZES

Bedroom 1	3.3 x 3.1
Bedroom 2	3.1 x 3.0
Bedroom 3	2.9 x 2.9
Living	4.3 x 3.7



**strivehomes.com.au 1800 2 STRIVE (1800 278 748)**



If required, we will make further adjustments to this design to make it perfect for you. Façade image for illustrative purposes only. The floorplan may illustrate features that are optional. All depth dimensions exclude porch/verandahs if they are protruding. Room sizes to be used as a guide only – refer to working drawings for all dimensions. Bedroom measurements are clear of robes. Lot width is based on Rescode regulations on a non-corner block.

# Tura 133



**MIN BLOCK: 10.5 x 21m** Based on 2.1m front / 3.7m rear setback



You'll love this compact design with a bit of flair and escape from the norm.

## AREA ANALYSIS

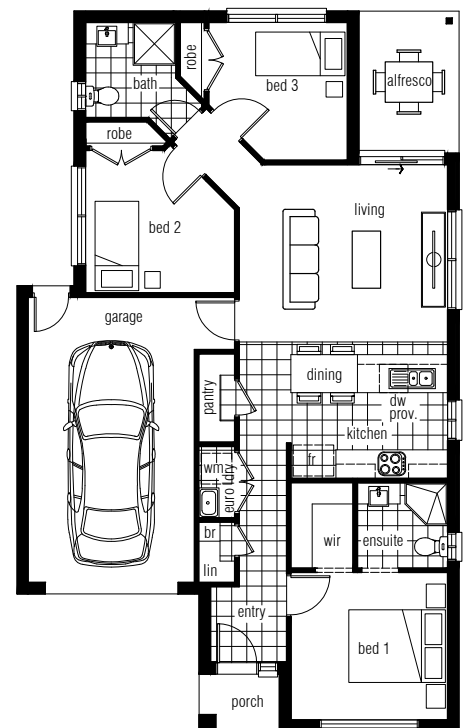
<b>Living</b>
90.05m <sup>2</sup> (9.69sq)
<b>Garage</b>
24.49m <sup>2</sup> (2.63sq)
<b>Porch</b>
2.02m <sup>2</sup> (0.21sq)
<b>Alfresco</b>
6.30m <sup>2</sup> (0.67sq)
<b>Total</b>
122.86m <sup>2</sup> (13.22sq)

## KEY FEATURES

- Master Bedroom located at front with its own walk-in-robe and ensuite
- Large walk in pantry and storage cupboard
- Well proportioned central living zone with access to rear alfresco
- Two other bedrooms conveniently located adjacent to bathroom

## ROOM SIZES

Bedroom 1	3.3 x 3.1
Bedroom 2	3.1 x 3.0
Bedroom 3	2.9 x 2.9
Living	4.3 x 3.7



## OVERALL DIMENSIONS

Width 9.3m Depth 15.15m

[strivehomes.com.au](http://strivehomes.com.au) 1800 2 STRIVE (1800 278 748)



If required, we will make further adjustments to this design to make it perfect for you. Façade image for illustrative purposes only. The floorplan may illustrate features that are optional. All depth dimensions exclude porch/verandahs if they are protruding. Room sizes to be used as a guide only – refer to working drawings for all dimensions. Bedroom measurements are clear of robes. Lot width is based on Rescode regulations on a non-corner block.