

# Noosa 169



**MIN BLOCK: 12.5 x 23m** Based on 2.1 m front / 3m rear setback

3

2

2

## AREA ANALYSIS

**Living**  
103.08m<sup>2</sup> (11.09sq)

**Garage**  
38.23m<sup>2</sup> (4.11sq)

**Porch**  
2.02m<sup>2</sup> (0.21sq)

**Alfresco**  
14.03m<sup>2</sup> (1.51sq)

**Total**  
157.36m<sup>2</sup> (16.93sq)

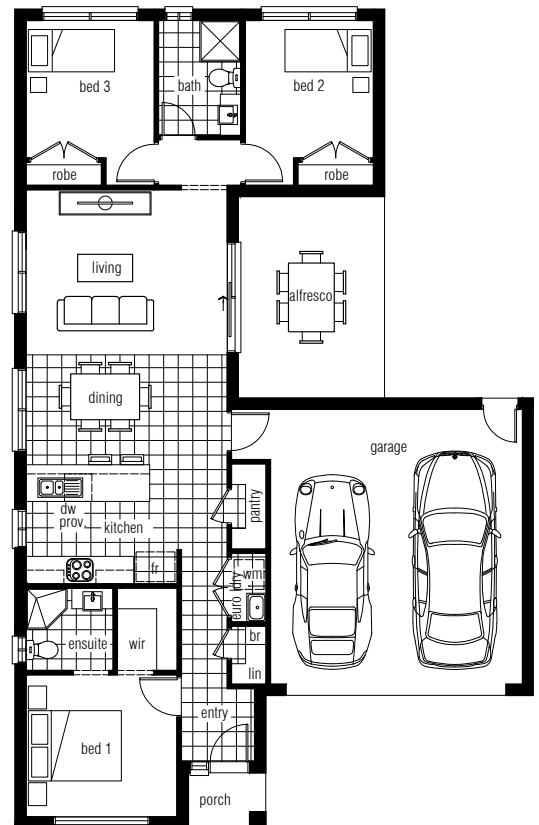
## KEY FEATURES

- Double garage with internal access and rear door to yard space
- Master suite at front is very accessible and comes complete with its own walk-in robe and ensuite
- Enjoy some outdoor time under the roofed alfresco area
- Two rear bedrooms are private and have ideal access to the bathroom between them

## ROOM SIZES

Bedroom 1 3.3 x 3.1  
 Bedroom 2 2.8 x 3.0  
 Bedroom 3 2.8 x 3.0  
 Living 4.3 x 3.6  
 Dining 4.3 x 2.9

The largest of the Noosa set of designs, this home offers the largest living space, alfresco and a double garage, but is still compatible with a relatively compact block, giving you incredible overall value.



## OVERALL DIMENSIONS

Width 11.3m Depth 17.85m



[strivehomes.com.au](http://strivehomes.com.au) 1800 2 STRIVE (1800 278 748)

If required, we will make further adjustments to this design to make it perfect for you. Façade image for illustrative purposes only. The floorplan may illustrate features that are optional. All depth dimensions exclude porch/verandahs if they are protruding. Room sizes to be used as a guide only – refer to working drawings for all dimensions. Bedroom measurements are clear of robes. Lot width is based on Rescode regulations on a non-corner block.

# Noosa 169



**MIN BLOCK: 12.5 x 23m** Based on 2.1 m front / 3m rear setback

- 3
- 2
- 2

## AREA ANALYSIS

<b>Living</b>	103.08m <sup>2</sup> (11.09sq)
<b>Garage</b>	38.23m <sup>2</sup> (4.11sq)
<b>Porch</b>	2.02m <sup>2</sup> (0.21sq)
<b>Alfresco</b>	14.03m <sup>2</sup> (1.51sq)
<b>Total</b>	<b>157.36m<sup>2</sup> (16.93sq)</b>

## OVERALL DIMENSIONS

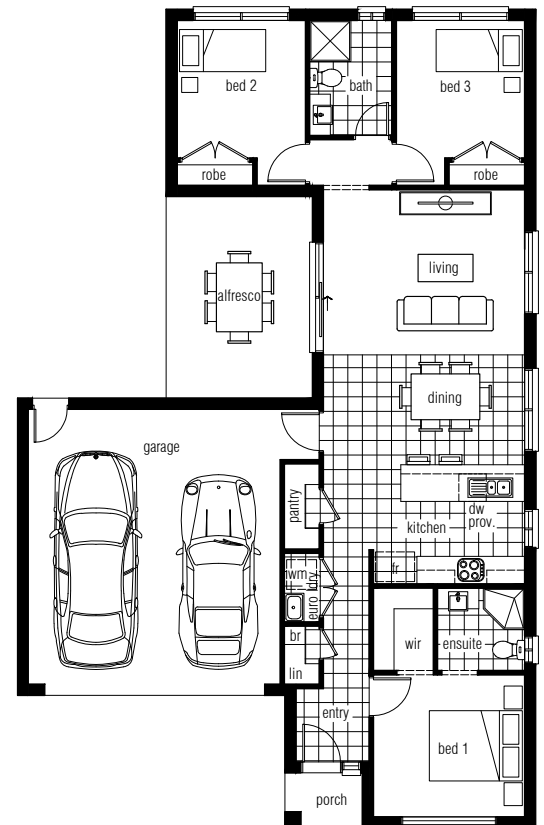
Width 11.3m Depth 17.85m

## KEY FEATURES

- Double garage with internal access and rear door to yard space
- Master suite at front is very accessible and comes complete with its own walk-in robe and ensuite
- Enjoy some outdoor time under the roofed alfresco area
- Two rear bedrooms are private and have ideal access to the bathroom between them

## ROOM SIZES

Bedroom 1	3.3 x 3.1
Bedroom 2	2.8 x 3.0
Bedroom 3	2.8 x 3.0
Living	4.3 x 3.6
Dining	4.3 x 2.9



[strivehomes.com.au](http://strivehomes.com.au) 1800 2 STRIVE (1800 278 748)

If required, we will make further adjustments to this design to make it perfect for you. Façade image for illustrative purposes only. The floorplan may illustrate features that are optional. All depth dimensions exclude porch/verandahs if they are protruding. Room sizes to be used as a guide only – refer to working drawings for all dimensions. Bedroom measurements are clear of robes. Lot width is based on Rescode regulations on a non-corner block.

