

# Noosa 155



**MIN BLOCK: 10.5 x 23m** Based on 4m front / 3m rear setback

- 3
- 2
- 1

## AREA ANALYSIS

<b>Living</b>	103.08m <sup>2</sup> (11.09sq)
<b>Garage</b>	25.27m <sup>2</sup> (2.72sq)
<b>Porch</b>	2.02m <sup>2</sup> (0.21sq)
<b>Alfresco</b>	14.03m <sup>2</sup> (1.51sq)
<b>Total</b>	<b>144.40m<sup>2</sup> (15.54sq)</b>

## OVERALL DIMENSIONS

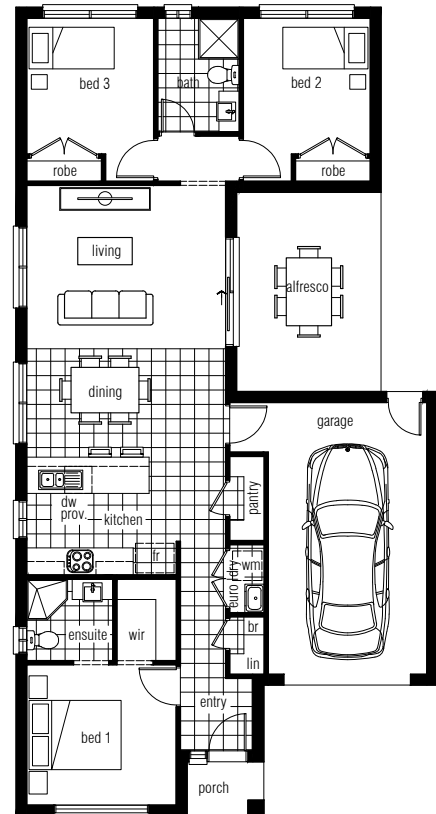
**Width 9.3m Depth 17.85m**

## KEY FEATURES

- Relax in your master suite, located at the front, away from the living zone
- Other bedrooms located at the rear give everyone their own sense of space
- Come together in the central living and dining zones
- Love the large walk-in pantry and added storage

## ROOM SIZES

Bedroom 1	3.3 x 3.1
Bedroom 2	2.8 x 3.0
Bedroom 3	2.8 x 3.0
Living	4.3 x 3.6
Dining	4.3 x 2.9



**strivehomes.com.au 1800 2 STRIVE (1800 278 748)**



If required, we will make further adjustments to this design to make it perfect for you. Façade image for illustrative purposes only. The floorplan may illustrate features that are optional. All depth dimensions exclude porch/verandahs if they are protruding. Room sizes to be used as a guide only – refer to working drawings for all dimensions. Bedroom measurements are clear of robes. Lot width is based on Rescode regulations on a non-corner block.

# Noosa 155



**MIN BLOCK: 10.5 x 23m** Based on 4m front / 3m rear setback

- 3 
- 2 
- 1 

## AREA ANALYSIS

<b>Living</b>
103.08m <sup>2</sup> (11.09sq)
<b>Garage</b>
25.27m <sup>2</sup> (2.72sq)
<b>Porch</b>
2.02m <sup>2</sup> (0.21sq)
<b>Alfresco</b>
14.03m <sup>2</sup> (1.51sq)
<b>Total</b>
144.40m <sup>2</sup> (15.54sq)

## OVERALL DIMENSIONS

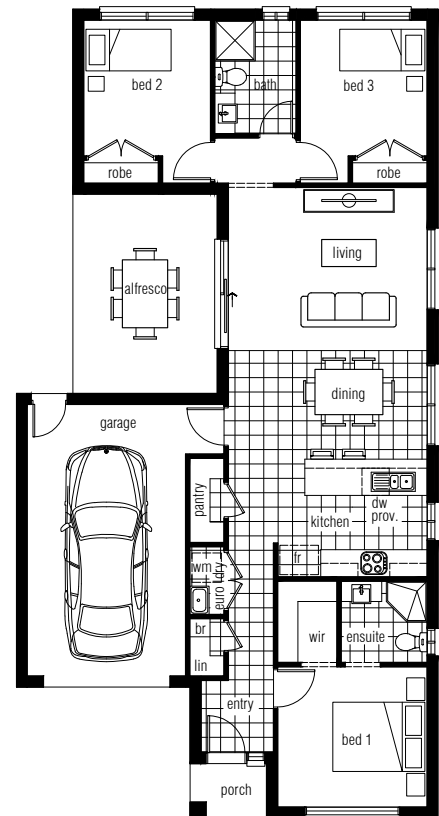
Width 9.3m Depth 17.85m

## KEY FEATURES

- Relax in your master suite, located at the front, away from the living zone
- Other bedrooms located at the rear give everyone their own sense of space
- Come together in the central living and dining zones
- Love the large walk-in pantry and added storage

## ROOM SIZES

Bedroom 1	3.3 x 3.1
Bedroom 2	2.8 x 3.0
Bedroom 3	2.8 x 3.0
Living	4.3 x 3.6
Dining	4.3 x 2.9



[strivehomes.com.au](http://strivehomes.com.au) 1800 2 STRIVE (1800 278 748)



If required, we will make further adjustments to this design to make it perfect for you. Façade image for illustrative purposes only. The floorplan may illustrate features that are optional. All depth dimensions exclude porch/verandahs if they are protruding. Room sizes to be used as a guide only – refer to working drawings for all dimensions. Bedroom measurements are clear of robes. Lot width is based on Rescode regulations on a non-corner block.